

RDOS Mosquito Control Program

The RDOS Mosquito Control Program responds to requests from **property owners to treat** when there are large areas of standing water on their property that provides breeding habitat for mosquitoes.

Areas that participate in the Regional program are:

Electoral Areas A, B, C, D, E, F, G, H, I, City of Penticton, Town of Osoyoos, Town of Oliver, District of Summerland, Town of Princeton and the Village of Keremeos



Without access, we cannot treat!

For more information on the Mosquito Control Program or mosquitoes in BC visit:

<https://www.rdos.bc.ca/departments/public-works/pest-control/mosquito-control/>
and

<http://www2.gov.bc.ca/gov/content/environment/pesticides-pest-management/business-industry/sector-specific-tools-guides/mosquitoes>

NOTE: there are several large areas in the region the RDOS cannot treat. These are usually Reserves or Conservancy lands



For more information contact:

Regional District of Okanagan-Similkameen
101 Martin Street
Penticton, BC
T: 250.492.4142
E: mosquito@rdos.bc.ca

Find us on   

**RDOS
Public Works
Department**



Mosquito Control Program



Mosquito Facts:

Early Spring

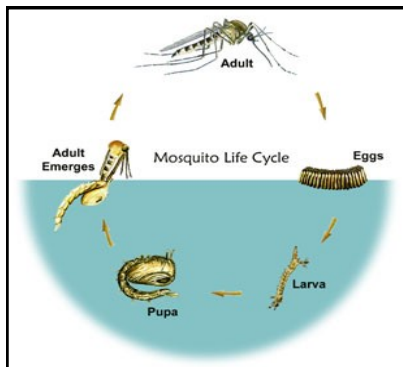


- Mosquitos (Aedes Vexan) are aggressive daytime biters
- They are the only species of mosquito that will fly up to 20km to obtain a blood meal
- They look for ideal habitats to rest, ready to feed



Summer

- Mosquitos (Culex) are active dawn and dusk biters
- They prefer fowl, but humans and horses are also a good blood meal
- Culex mosquitoes are vectors and can carry diseases like West Nile



Property Maintenance to Reduce Breeding Habitat

- Keep lawn short, 3 to 4"
- Trim bushes to 2.5 feet off the ground
- Dispose/recycle all unused tires and containers that can accumulate water
- Keep ponds clear and free of debris
- Replace water in bird baths and water troughs weekly, use screens to cover rain barrels
- Avoid planting shrubs that attract mosquitos i.e. cedar hedges, juniper bushes
- Fix water leaks in irrigation
- Clean debris from rain gutters
- Dump water off tarps and pool covers
- Fill depressions in landscape that can hold water



Help us Help you!

Mosquito crews treat areas with high larvae counts to control Mosquito infestations.



The effectiveness of mosquito control is directly related to the ability of the crew to access your property and flooded areas.

To help us maintain the success of mosquito control program:

- Have easy access through fenced areas with gates and clear walkways
- Allow for safe passage past pets and livestock
- Remove objects that are hidden by flood water
- Manage your yard to avoid standing water
- Dispose of any container types that accumulate water

Chemical substances, such as petroleum products, **should not be used** as control methods. Bleach, oils, soaps, and many other substances can be toxic to fish, amphibians, birds & insects.

