


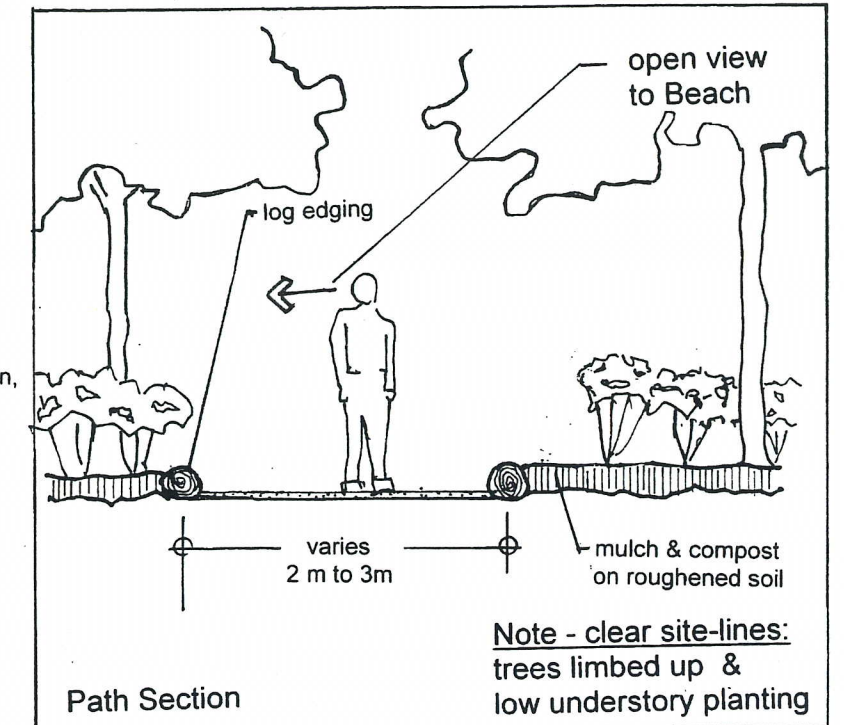
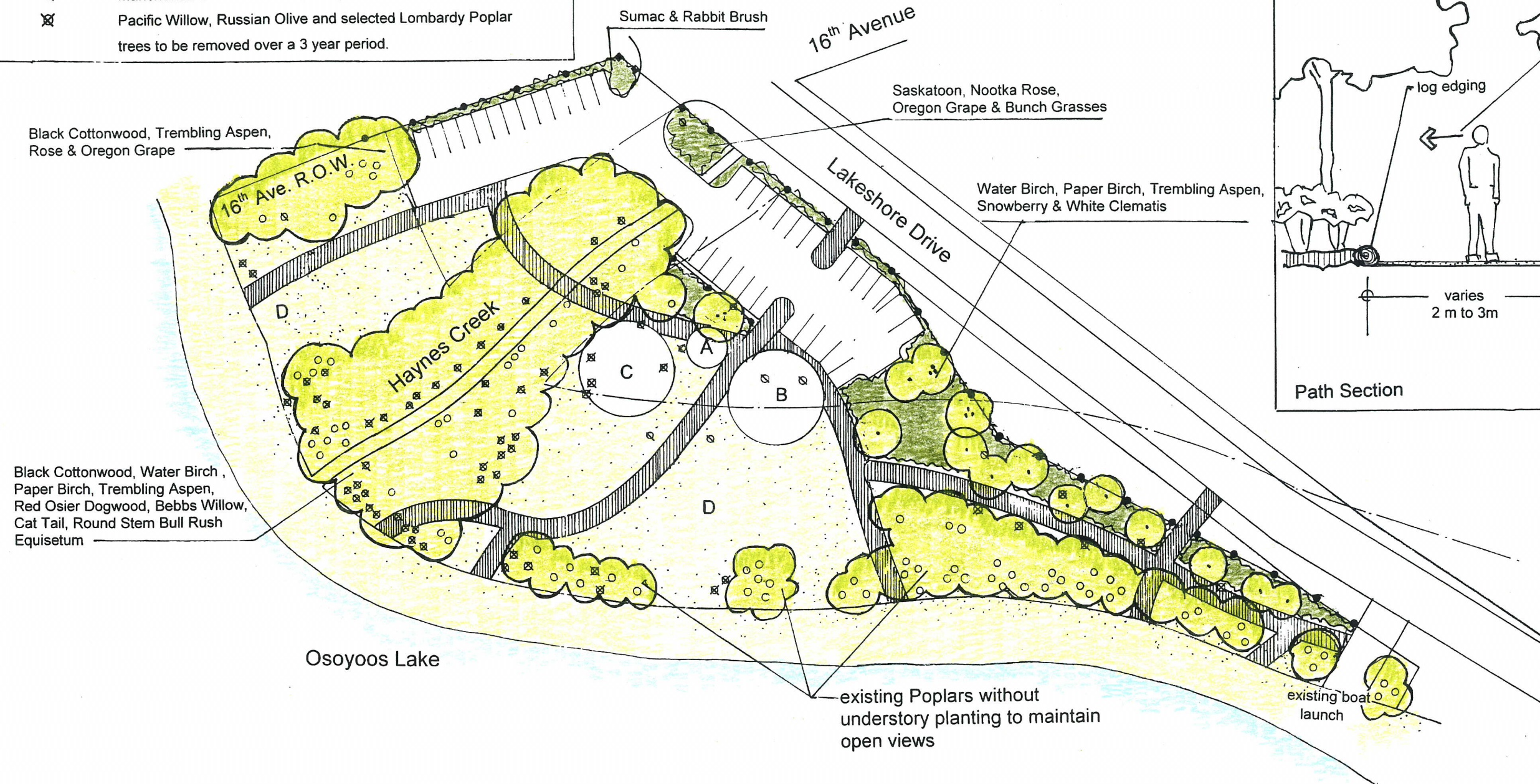


- key.
- SPEA Boundary
  - A main pedestrian entry with signage
  - B change rooms & washrooms
  - C children's' playground
  - D recreational area with sand & gravel surfacing (use existing on site)
  -  path with gravel surfacing
  -  trees with understory planting
  -  post & rail fence
  - O Poplar & Willow trees to be retained
  - Q Manchurian Elm trees: modified crown & future removal
  - X Pacific Willow, Russian Olive and selected Lombardy Poplar trees to be removed over a 3 year period.

Notes:

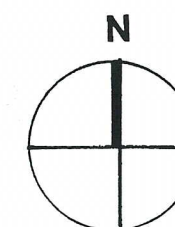
- Logs from tree removal to be used as edging for planted areas adjacent to paths.
- Other material from tree removal to be chipped and used as mulching
- Except for trees removed along Haynes Creek, tree roots are to be removed with surface left loose and rough for planting



Donna L. Lane  
landscape architect inc.

8345 Canyonview Road  
Summerland, BC V0H 1Z2  
t: 250-494-0982  
f: 250-494-0990  
e: dlanela@shaw.ca

Osoyoos Lake Regional Park  
landscape concept plan



date: 3 Dec. 10  
scale: 1 : 500  
drawn: D.L.

